



## Beaufort County Public Works Stormwater Infrastructure Project Summary

Project Summary: Seigler Road

Project # 2009-079                      Completed: Jan-09

Narrative Description of Project:  
Cleaned out 766 L.F. of roadside ditch and 30 L.F. of outfall ditch.  
Installed (1) crossline pipe. Repaired washout and hydroseeded for erosion control.

**Material Cost, Rental Equipment Summary, and Labor**

Material	Unit	Cost/Unit	Qty	Cost
15" RCP Pipe (4' joint)	ton	\$12.32	4.0	\$49.28
15" RCP Pipe	ton	\$9.79	16.0	\$156.64
Fill Dirt	ton	\$1.00	16.0	\$15.95
Silt Fence	sy	\$0.24	4.6	\$1.10
Hydrogel	cup	\$2.82	1.0	\$2.82
Hydromulch	bale	\$16.75	2.0	\$33.50
Hydromax Liquid Fertilizer	cup	\$2.93	1.0	\$2.93
Annual Rye Grass Seed	bag	\$29.35	1.0	\$29.35
Water	gallon	\$0.01	500.0	\$5.00
Pin Flags	each	\$0.06	13.0	\$0.78
Gas	gallon	\$1.62	12.0	\$19.44
Diesel	gallon	\$1.88	85.0	\$159.80
Labor	hours		177.0	\$5,979.84
<b>Total Cost of Materials, Rental Equip., and Labor</b>				<b>\$6,456.43</b>

Note: Labor cost includes the employee's salary plus fringe benefits.

**Equipment Cost**

Item	Asset No.	Cost/Hour	Hrs.	Cost
Bobcat T200	22782	\$17.40	3.0	\$52.20
JCB Backhoe	22810	\$36.50	16.0	\$584.00
Hydroseeder	18909	\$10.70	3.0	\$32.10
Pickup Trucks		\$5.43	38.0	\$206.34
Dump Trucks		\$16.68	33.0	\$550.44
<b>Total Equipment Cost</b>				<b>\$1,425.08</b>

Cost/hour excludes fuel cost.

Total Cost:                      \$7,881.51

**Site Photographs**

Before



During



After



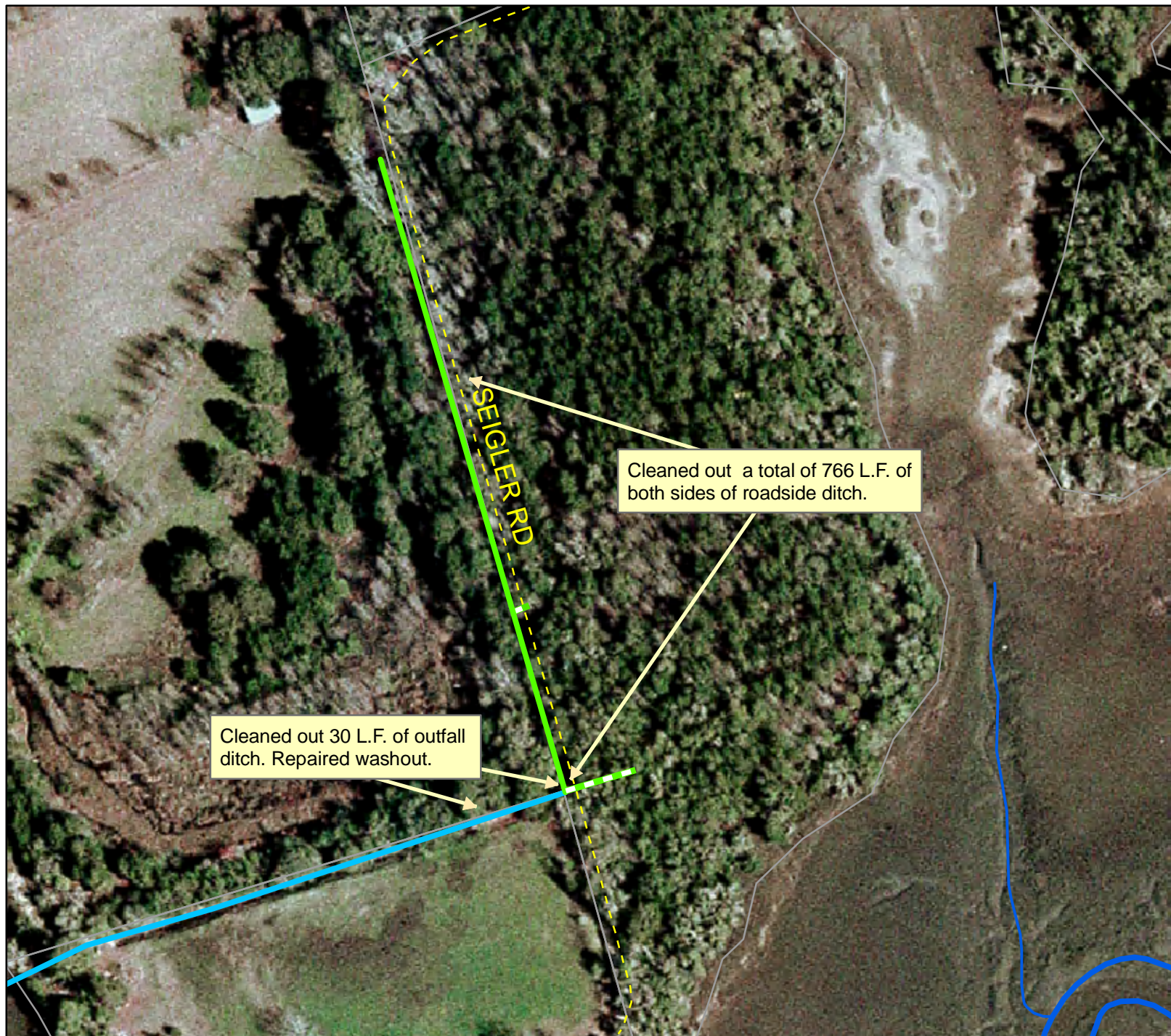
Project: Seigler Road

Activity: Ditch Maintenance

Project #: 2009-079

Township: Sheldon

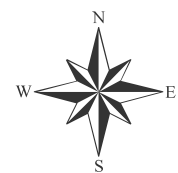
Completed: January 2009



**Legend**

**Drainage Type**

- River
- Stream
- Outfall
- Lateral
- Roadside
- Crossline
- D/W
- Access
- Piped
- Bleeder
- Parcels



1 inch equals 146.17 feet